

TOUCH BUTTONS EU TOUCH-TASTEN EU



B-EDL 4EU.01



B-EDL 2EU.01

Overview

The B-EDL 4/3/2/1EU.01 has a seamless glass finish, and a backing plate specifically designed for Europe. The module can control multiple targets via its capacitive buttons, which have a customizable RGB LED backlight.

With a continuously smooth and uninterrupted glass finish the B-EDL 4/3/2/1EU.01 is designed for the EU market and sets a new standard in functional design. Each button in the series has a range of control options. There are in total 8 different ways to press each button. This means that although the units have only 1 to 4 physical buttons, because each button has various control methods countless devices can be managed.

Each button is capable of controlling multiple targets, these targets can include scenes, sequences, time switches, universal switches, single channel adjustment, broadcast scenes, broadcast channels, and a host of other functions. In essence the unit can control almost any home automation device, with a simple touch of a button.

Technical Details

Power Supply	DC12-30V
Power consumption (from B-PI EU.01)	20mA/DC24V
Working Temperature	-5°C~45°C
Working relative Humidity	Up to 90%
Storage Temperature	-20°C~+60°C
Storage relative humidity	Up to 93%
Dimensions	86×86×10.5 (mm)
Weight	B-EDL 1EU.01: 109(g) B-EDL 2EU.01: 216.5(g) B-EDL 3EU.01: 109.5(g) B-EDL 4EU.01: 110(g)
Housing material	Glass
Installation	EU wall box
Protection rating	IP20
CE, RoHS, UL Approved	

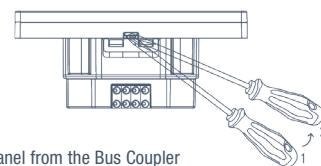
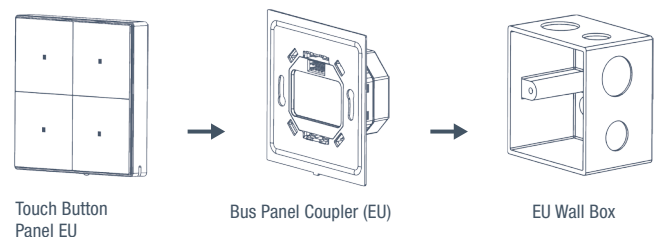
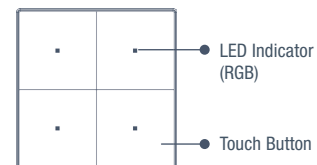
Features

- Key Mode: Single on/off, Single on, Single off, Combination on, Combination off, Short/long press, Short press/long press.
- Key Control Type: Scene, Sequence, Timer, Universal Switch, Single Channel Control, Broadcast Scene, Broadcast Channel, Curtain Control, GPRS Control, Panel Control, Security Module, Music Play, Universal Control, etc.
- Built-in IR receiver, need to replace a plate with an IR receiving hole to enable the IR remote control function.
- IR remote control function.
- Adjustable backlight colour and intensity

Safety Instructions

- The screw down torque should not exceed 0.1Nm.
- The panel should be installed indoors only.
- Wrong connections on the bus interface will damage it.
- Never let liquids get into this module, it will damage this device.
- Do not allow AC power into the Bus interface, it will damage all the devices in the system.
- Do not let the panel come into contact with liquids or corrosive gases.
- Ensure good ventilation.

Installation



Procedure to Separate Panel from the Bus Coupler